

Case Study

Southend-on-Sea Borough Council completed a single house in January 2015, please see below for information which speaks to timescales and build costs. Please be aware the costs cited do not include the cost of land, which you will need to factor into your budgeting. Serviced plots can range in value depending on the area and size of plot, an approximate range of £50,000 – 100,000.

Start on site: August 2014

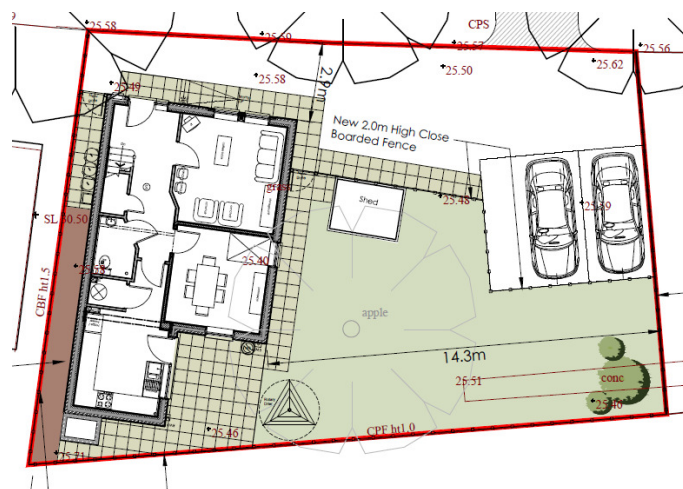
Completion: January 2015

Development Cost: Within budget, under £1500 per m².

Accommodation Type: 4 bedroom detached House (109m² internal floor space) with garden and off-street parking for two cars. Built in excess of HCA minimum space guidelines.



Features: Solar Thermal Panels, which are estimated to contribute 18% of the annual energy needs for the tenants. Built to Code 4 standard. Lifetime homes and Secured by Design achieved. DDA Compliant, fully adaptable with provision for hoist, through floor lift and/or stair lift.



Cost Estimate – For similar self-build project

Contractor: £175,000

Architect & Employers Agent: £10,000

Estimated cost of serviced plot: £100,000

Total Estimated Budget: £285,000