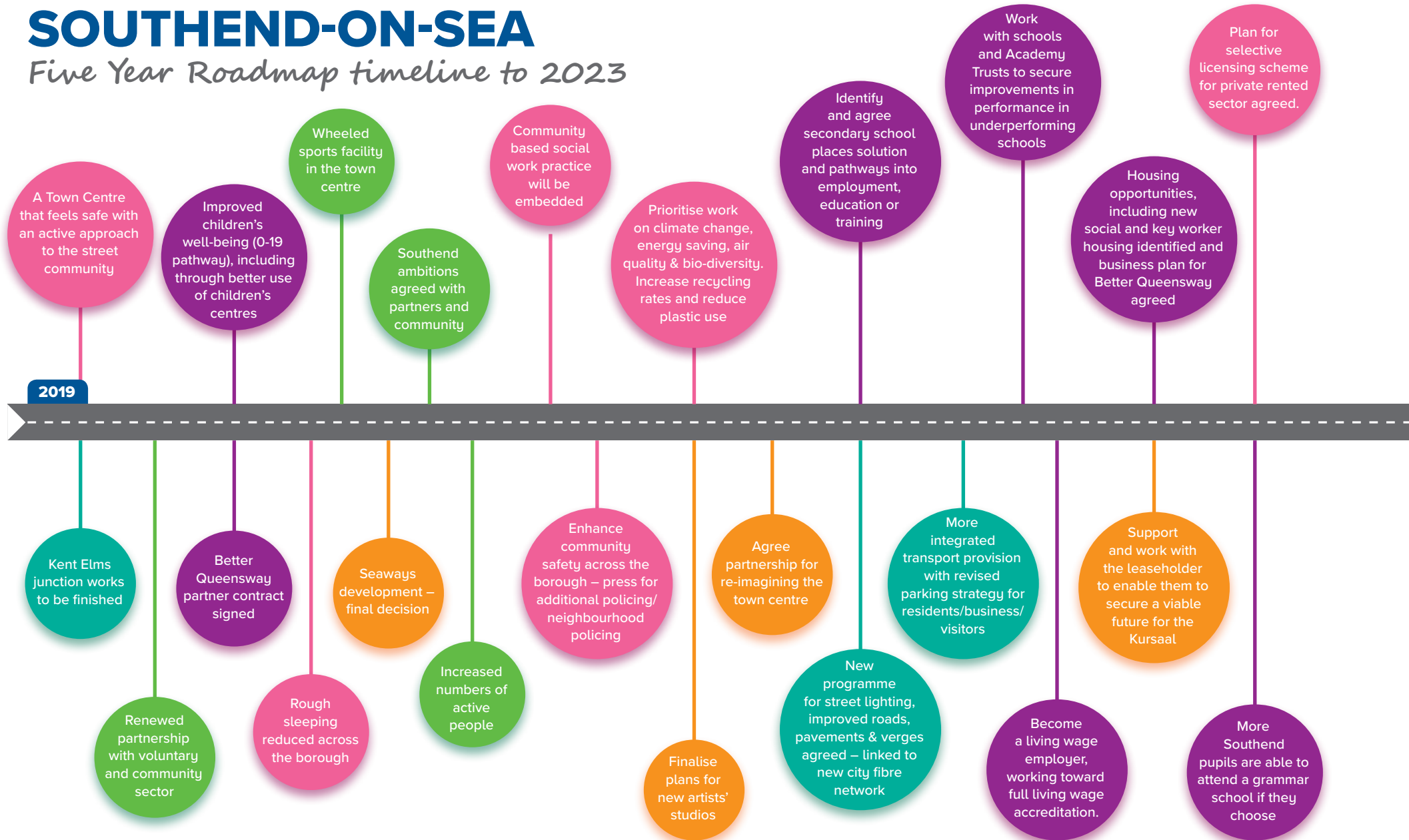


# SOUTHEND-ON-SEA

## Five Year Roadmap timeline to 2023



2020

Data Warehouse using Real Time information

Building programme of private, locally affordable housing, for rent and sale begins

Localities – integrated health and care services provided locally, including promotion of new Shoebury health centre and others to tackle health inequalities

The gap between disadvantaged pupils and their peers continues to close

Enhanced skills provision, including through more apprenticeships

Campaigning for further river crossing east of Lower Thames crossing

More integrated transport provision

Improved pavements and carriageway restoration

Better Queensway regeneration and housing scheme starts

Airport Business Park on site (first tenant)

Customers can access all Council services digitally / online

Agile working culture being embedded in Council

Reimagined vibrant Town Centre with community shared space for arts, music, retail and homes

Following the start of Queensway regeneration, develop further plans for housing opportunities

Reviewing and delivering a more integrated children's pathway across health and social care to include community paediatrics service

New social care home operational

Increased local accommodation for looked after children

Campaign for a new hospital for the Southend area

Estuary 2020 festival

Raising aspiration and educational attainment in deprived areas

Preventative measures for improved street cleansing including dog fouling

2021

Pier Pavilion opens

Council moving towards financial independence

Cliff Pavilion upgraded

Joint Strategic Plan agreed by south Essex local authorities

A127 Bell Junction improvement completed

Work to enhance flood defences

Local Full Fibre Network available to every Southend home and business

With the Elizabeth line (Crossrail) running services from Shenfield, campaign starts to extend line to Southend

A127 maintenance complete

Forum 2 opens

All schools will be good or outstanding

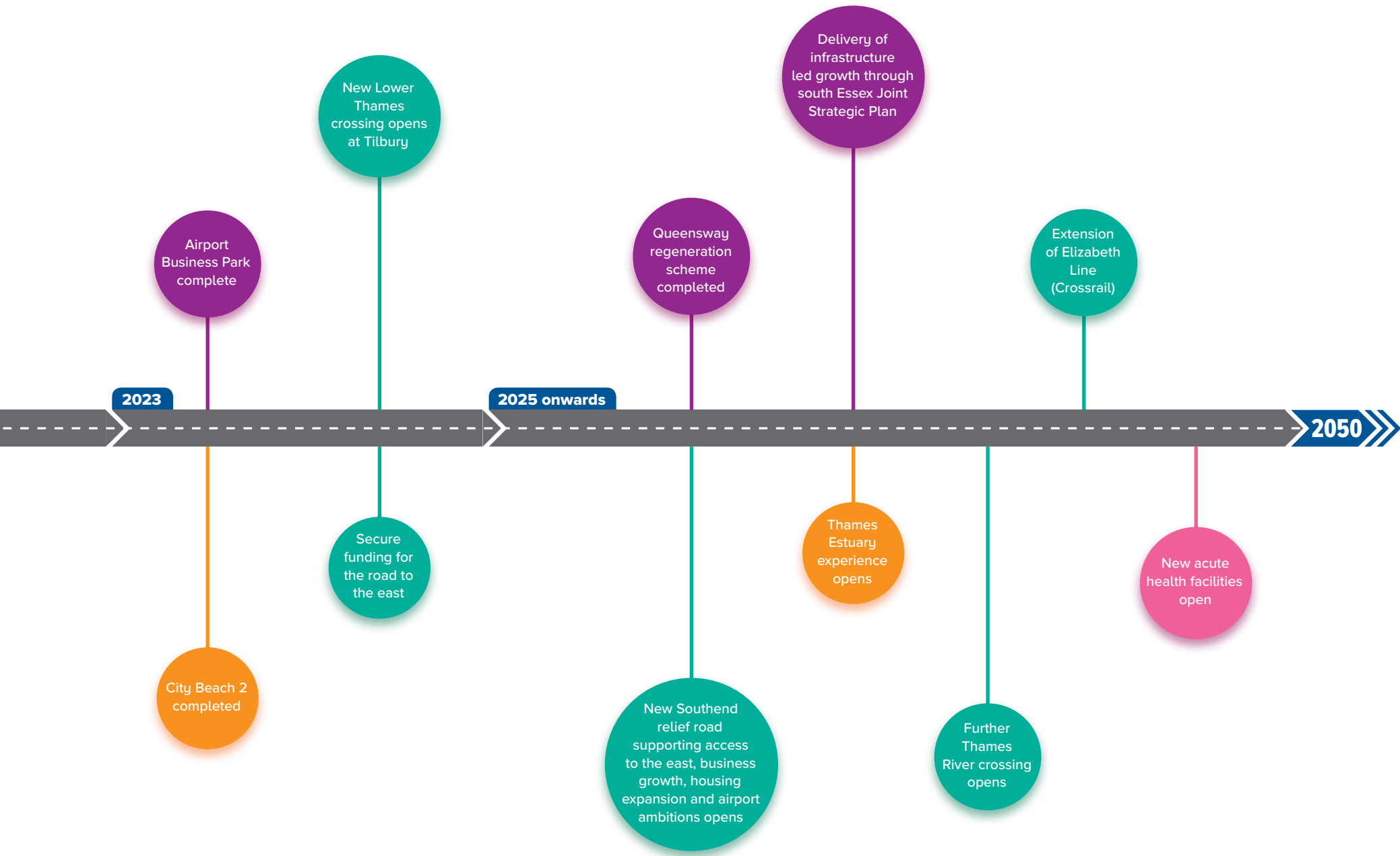
Developing all age community services including mental health, adult social care and children's services aligned to primary care in community hubs in localities

Local Plan adopted

Commission waste collection and disposal services for 2023

Air quality further improved, particularly around key road junctions

Progress sea defences



2023

2025 onwards

2050

Airport Business Park complete

New Lower Thames crossing opens at Tilbury

Queensway regeneration scheme completed

Delivery of infrastructure led growth through south Essex Joint Strategic Plan

Extension of Elizabeth Line (Crossrail)

City Beach 2 completed

Secure funding for the road to the east

New Southend relief road supporting access to the east, business growth, housing expansion and airport ambitions opens

Thames Estuary experience opens

Further Thames River crossing opens

New acute health facilities open