

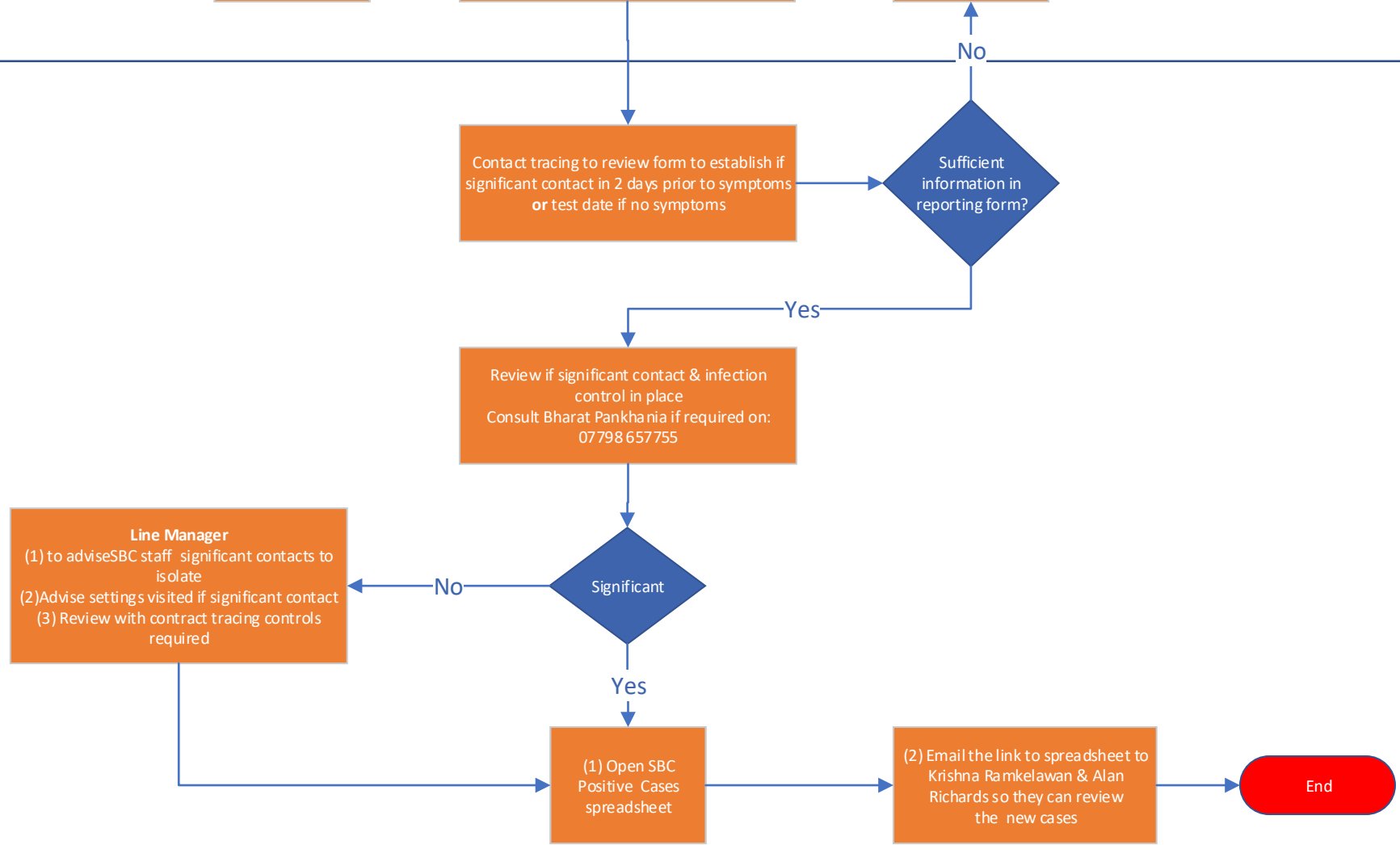
SBC Covid-19 SBC Internal Reporting

Contact tracing monitors reports of positive cases reported by SBC staff. The purpose of the reporting is to review whether there has been significant contact whilst working in the Council offices or onsite undertaking duties. These are received as and when and reviewed immediately and then the outcome reported to Krishna Ramkhalawon and Alan Richards. The objective is to ensure that there are adequate controls in place and review where there are not.

Staff / Manager



Contact Tracing



SBC Covid-19 Health Settings

There is a healthcare setting which deals with the following:

- Doctors
- Hospices
- Hospitals
- Sexual health

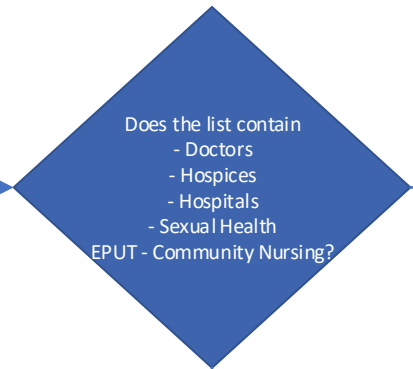
EPUT - Community Nursing

Intelligence Cell

Sends daily list to:
- Contact Tracing Inbox
- Healthcare Contact Tracing

Contact Tracing

Reg Services list covers:
- Dentists
- Opticians
- Pharmacists
- other healthcare



Send to: sccg.ttcehealth@nhs.net
Note: DO NOT send patient information

Take forward using SBC Work
Place settings process

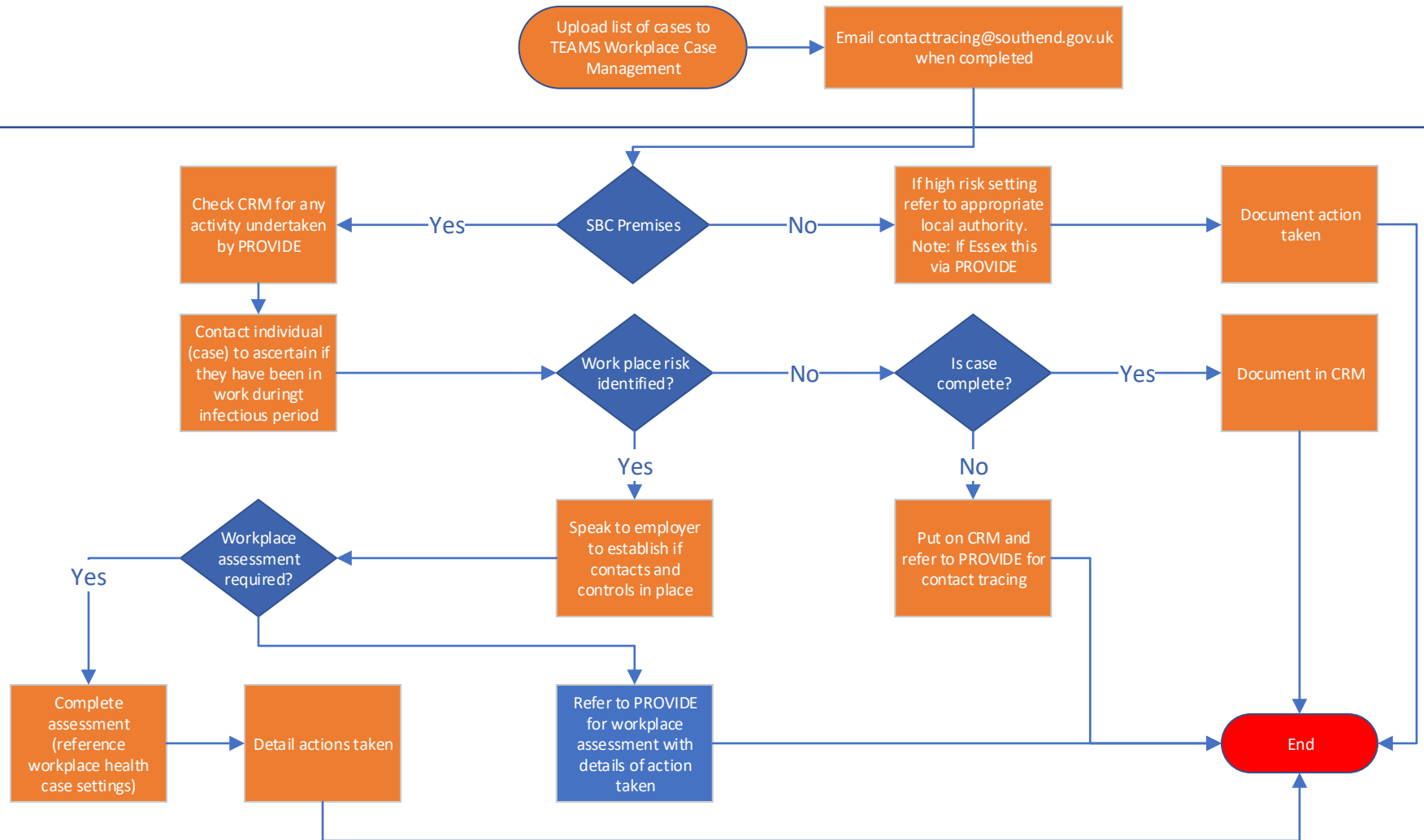
SBC Covid-19 Work Place Settings

This is an early intervention. The list indicates if they are complete or not. Complete means that NHS Test and Trace have completed contact tracing with them, and therefore PROVIDE will not want to receive them. Those that are incomplete may be in the system but not have had the intervention yet. Also you will need to acknowledge with them we are looking at the workplace setting and measures in place, and that they either will have (if complete) or will be (if in progress) be contacted by Test and Trace to confirm they are self-isolate and review their Contacts.

When referring cases to the Essex and Southend Contact Tracing Service (PROVIDE) or to the Health Protection Agency for advice always send in Egress. Enter into the browser: Reader.nhs.net The email address for Health Protection Team is EOE.CRC.phe.gov.uk and for PROVIDE provide.escontacttracing@nhs.net. Remember, when sending to generic inbox you will get a request from an individual at these locations for you to allow them to open it. You have to go back into Egress and approve and save.

Intel. Cell

Contact Tracing

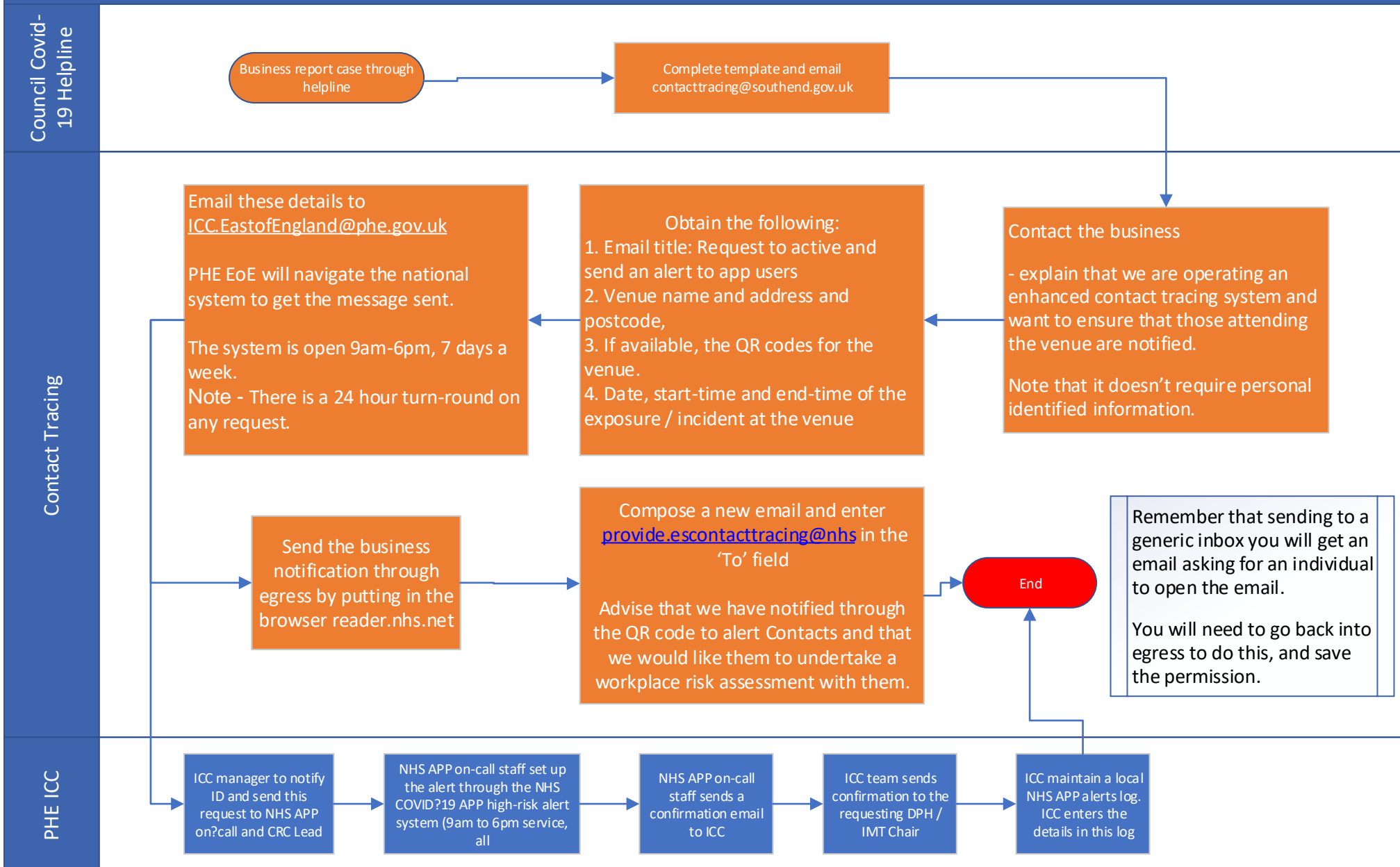


SBC Covid-19 Process for Incoming Workplace Settings

Businesses are reporting cases to the Council's Covid-19 line, which are then forwarded to the contacttracing@southend.gov.uk inbox for a workplace risk assessment to be undertaken.

In the event that a venue being identified as a potential source of a cluster/outbreak of COVID-19, the local COVID-19 Health Protection Board OR Multiagency Incident Management Team through their risk assessment can decide to send an alert to app users who have been at the venue on a certain date / time (in addition to local and national public health actions)

We have been asked how Councils can send an alert/ advice message to people who have visited venues that are using the QR code linked to the NHS App.



SBC Covid-19 Common Exposure Report

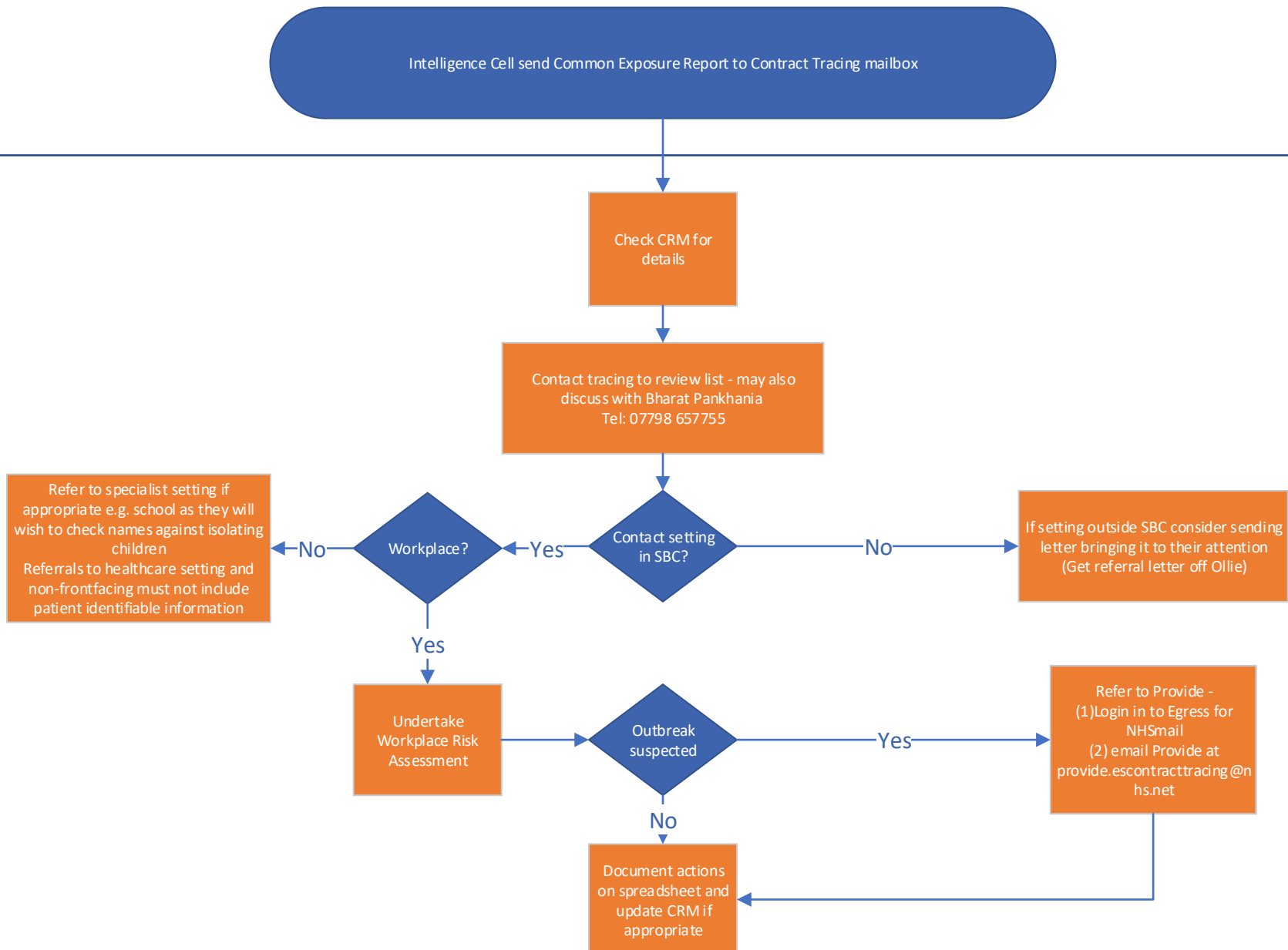
This is a report from the intelligence cell of where people think they may have contracted COVID-19, or where there appear to be links to workplaces or other settings. This is produced periodically. As all notifications are SBC residents it may include settings outside the borough.

When referring cases to the Essex and Southend Contact Tracing Service (PROVIDE) or to the Health Protection Agency for advice always send in Egress. Enter into the browser: Reader.nhs.net The email address for Health Protection Team is EOE.CRC.phe.gov.uk and for PROVIDE provide.escontracttracing@nhs.net. Remember, when sending to generic inbox you will get a request from an individual at these locations for you to allow them to open it. You have to go back into Egress and approve and save.

Function

Intelligence Cell send Common Exposure Report to Contract Tracing mailbox

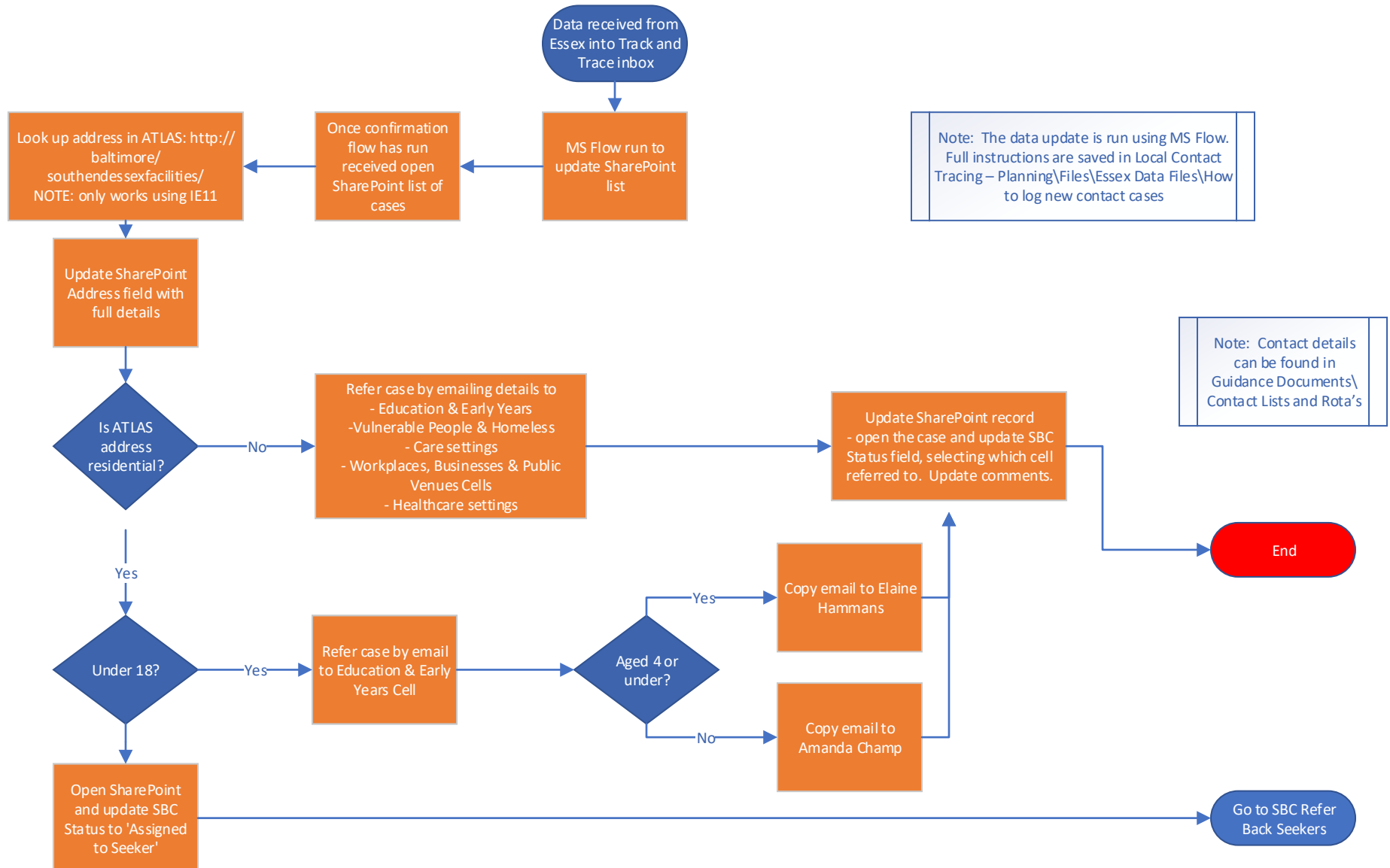
Contact Tracing



SBC Covid-19 1 SBC Refer Backs – Data / Team Leader

Refer back / uncontactables list are those that have not responded to the NHS test and trace. The Essex and Southend Contact Tracing Service will have also tried to contact these individuals, by text, email and letter before passing to Southend. The Seekers are a SBC team tasked to try to contact these individuals, firstly by phone and then by knocking on the door. They have support from the Operation Talla (Police support where it is thought that a person may not be comfortable opening the door)

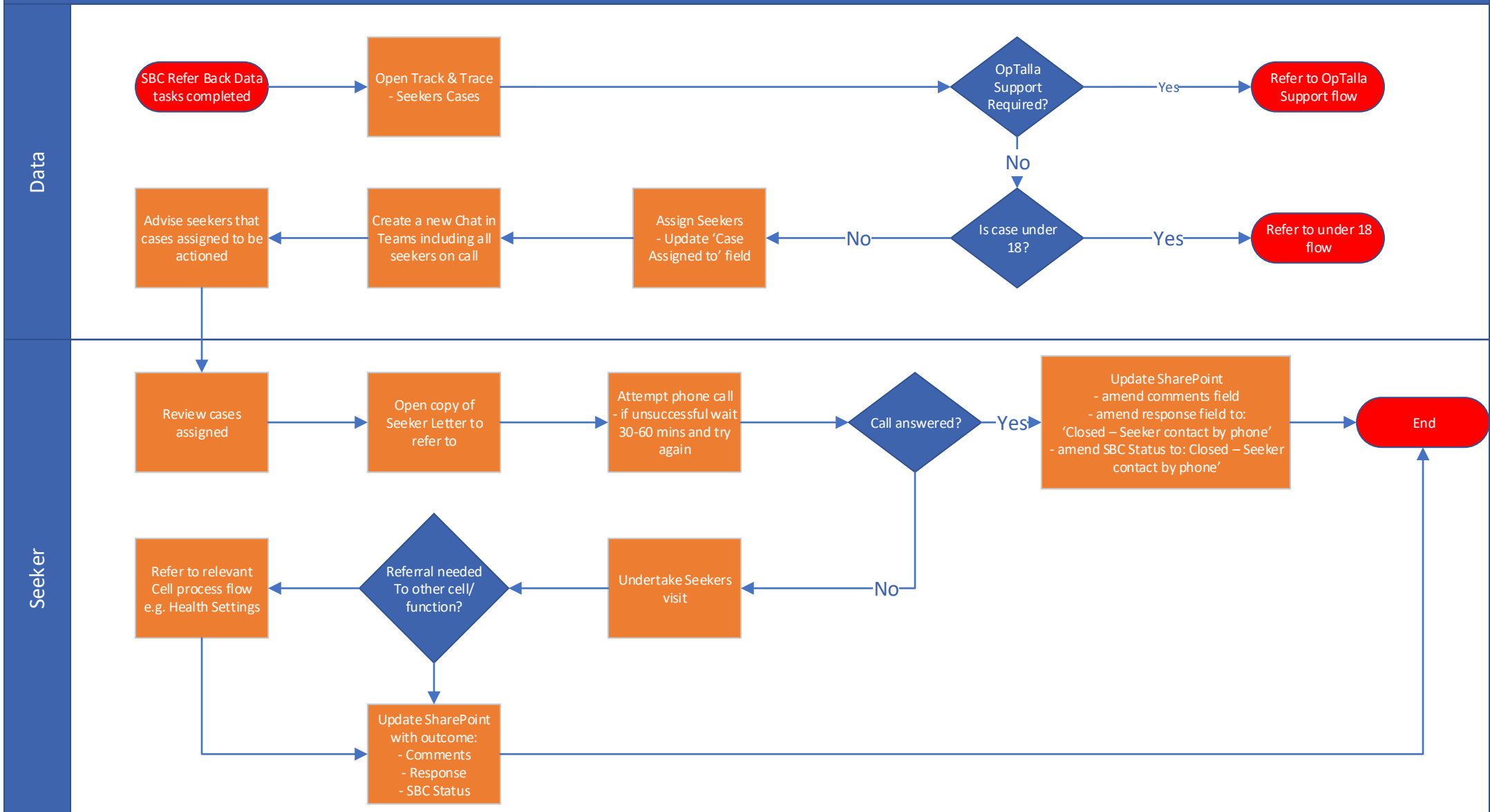
Data



SBC Covid-19 2 SBC Refer Back Seekers Flow

Refer back / uncontactables list are those that have not responded to the NHS test and trace. The Essex and Southend Contact Tracing Service will have also tried to contact these individuals, by text, email and letter before passing to Southend. The Seekers are a SBC team tasked to try to contact these individuals, firstly by phone and then by knocking on the door. They have support from the Operation Talla (Police support where it is thought that a person may not be comfortable opening the door)

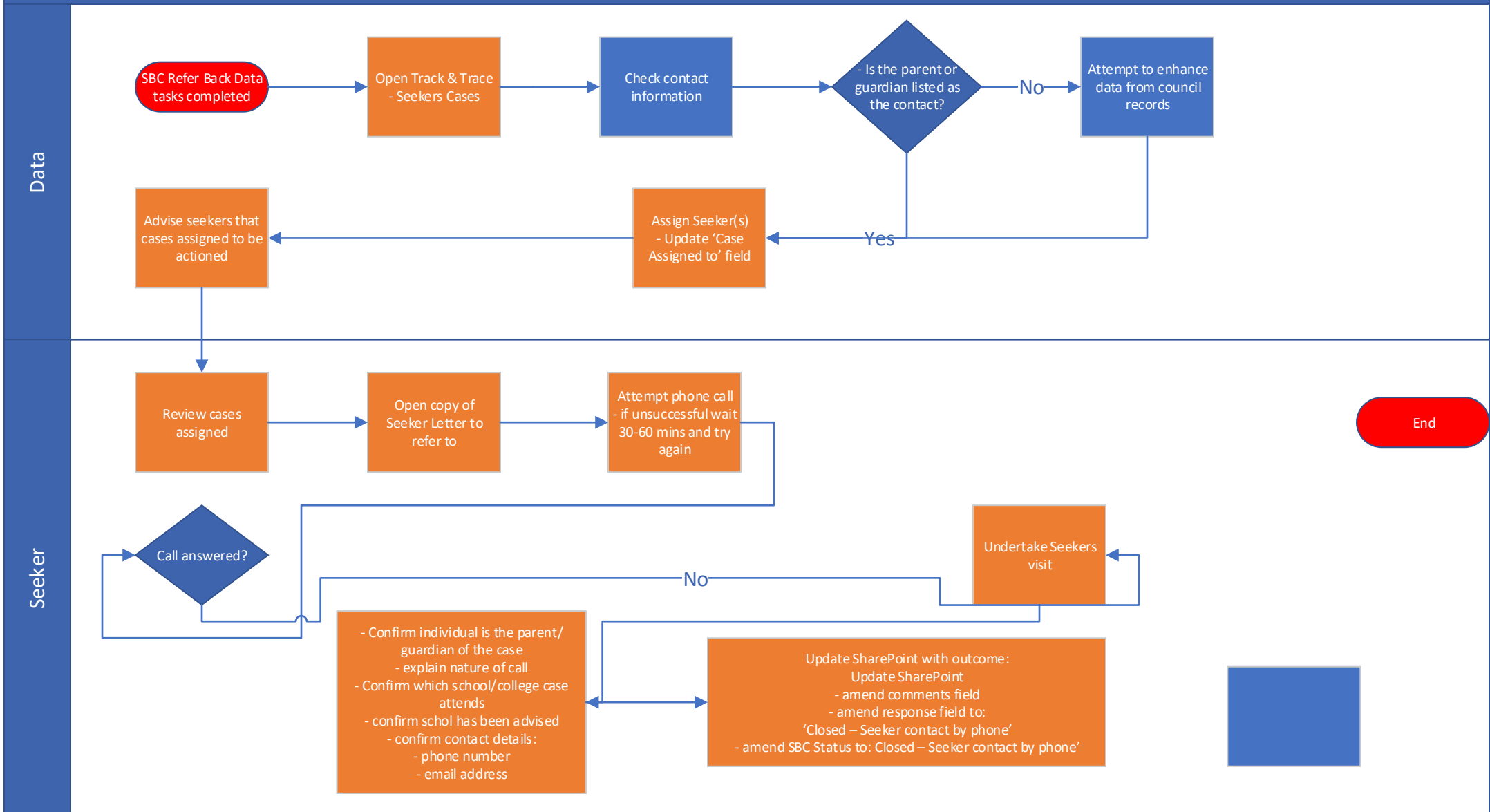
The team has improved the responses of these positive cases by this approach, the team has found sometimes that people have been contacted a number of times by national and therefore do not want to engage further, or may be in hospital / unwell and therefore unable to do so. This service invites the individuals to contact the Essex and Southend Contact Tracing Service who will complete the surveillance required and refer Contacts of these Cases back into the system for follow up.



SBC Covid-19 2 SBC Refer Back Under 18 flow

Refer back / uncontactables list are those that have not responded to the NHS test and trace. The Essex and Southend Contact Tracing Service will have also tried to contact these individuals, by text, email and letter before passing to Southend. The Seekers are a SBC team tasked to try to contact these individuals, firstly by phone and then by knocking on the door. They have support from the Operation Talla (Police support where it is thought that a person may not be comfortable opening the door)

The team has improved the responses of these positive cases by this approach, the team has found sometimes that people have been contacted a number of times by national and therefore do not want to engage further, or may be in hospital / unwell and therefore unable to do so. This service invites the individuals to contact the Essex and Southend Contact Tracing Service who will complete the surveillance required and refer Contacts of these Cases back into the system for follow up.

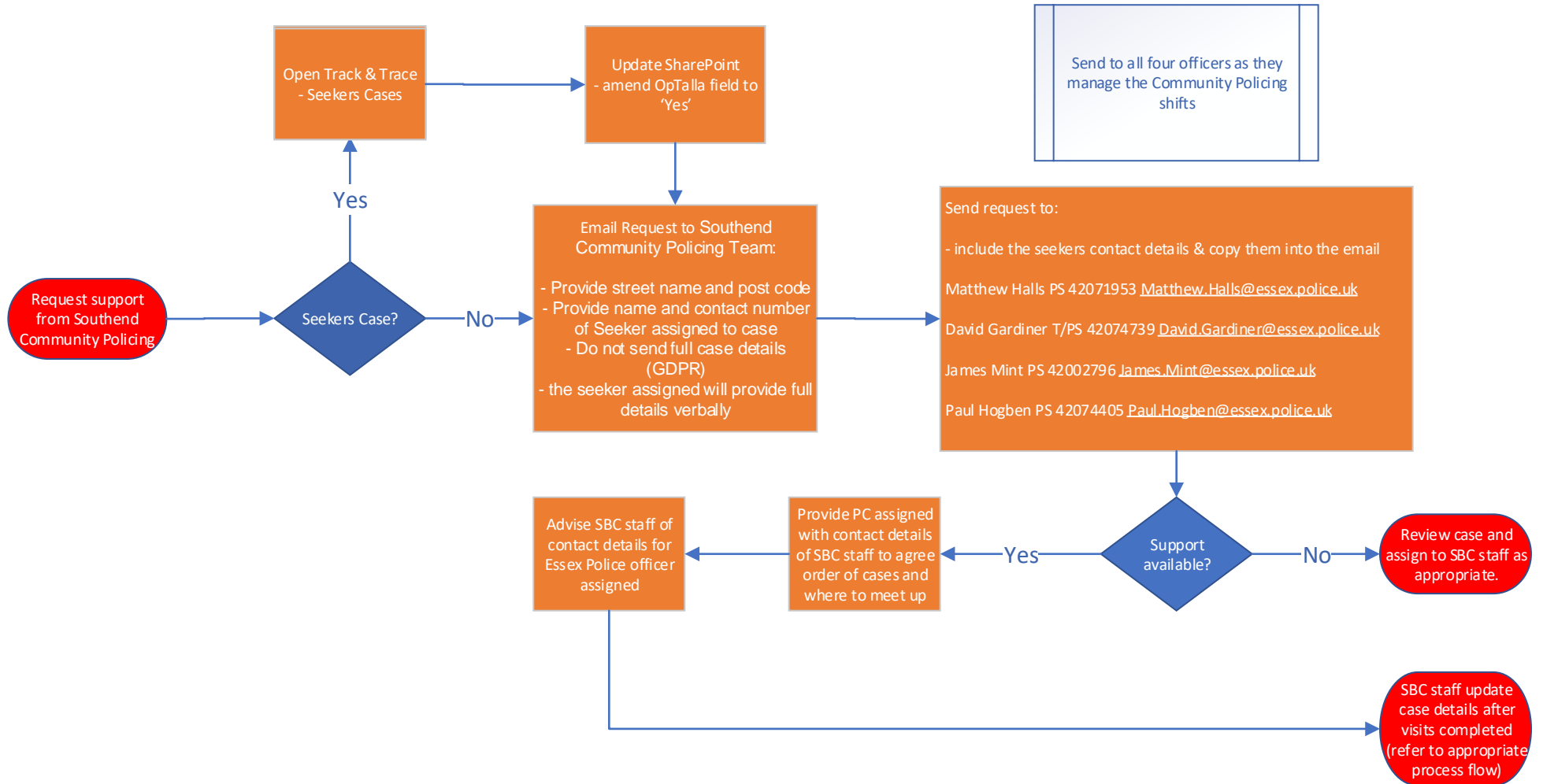


SBC Covid-19 Refer Backs – OpTalla Support Requests

Refer back / uncontactables list are those that have not responded to the NHS test and trace. The Essex and Southend Contact Tracing Service will have also tried to contact these individuals, by text, email and letter before passing to Southend. The Seekers are a SBC team tasked to try to contact these individuals, firstly by phone and then by knocking on the door. They have support from the Operation Talla (Police support where it is thought that a person may not be comfortable opening the door)

The team has improved the responses of these positive cases by this approach, the team has found sometimes that people have been contacted a number of times by national and therefore do not want to engage further, or may be in hospital / unwell and therefore unable to do so. This service invites the individuals to contact the Essex and Southend Contact Tracing Service who will complete the surveillance required and refer Contacts of these Cases back into the system for follow up.

Data



SBC Covid-19 Local Outbreak Management Plan

Process Flow

