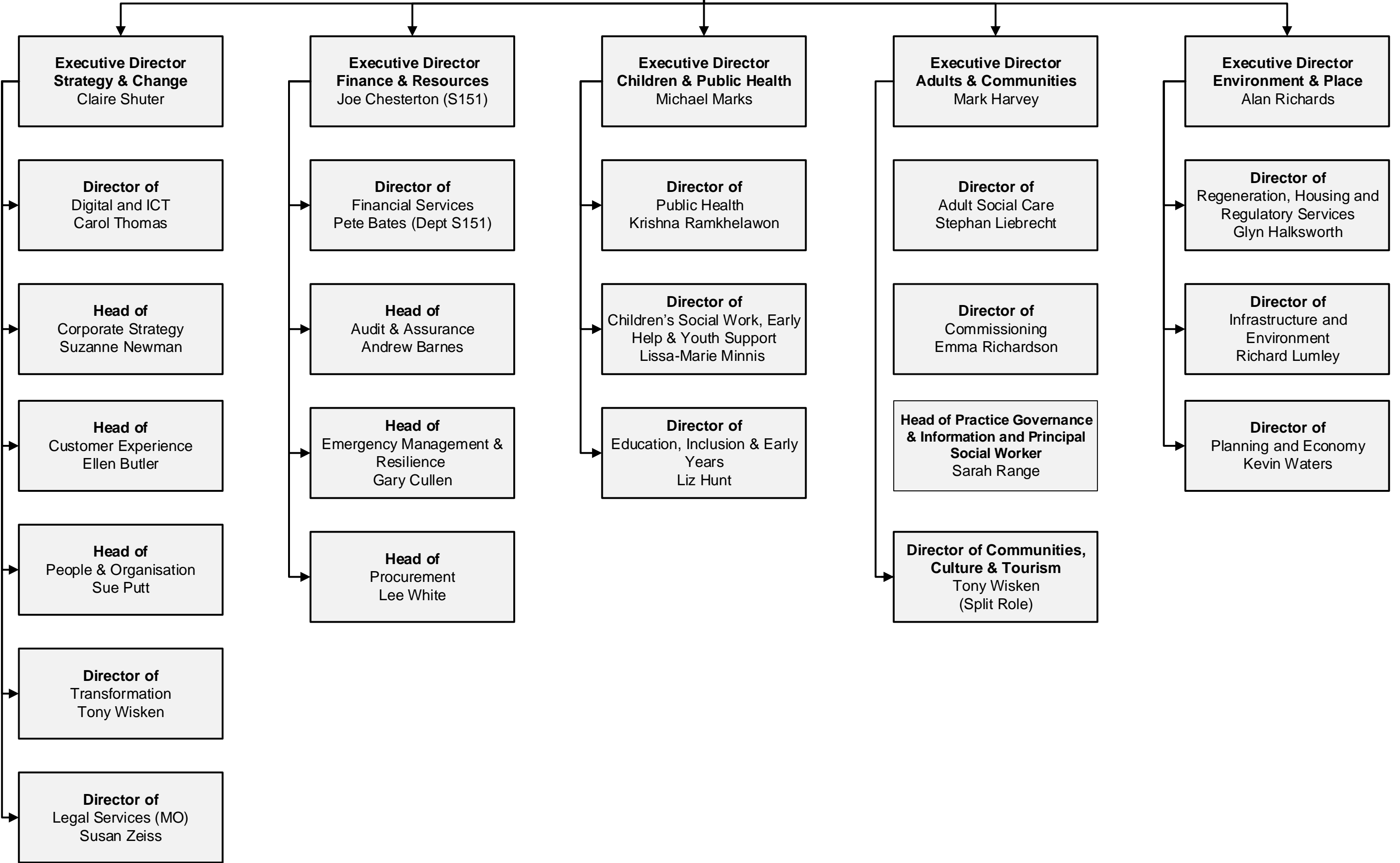
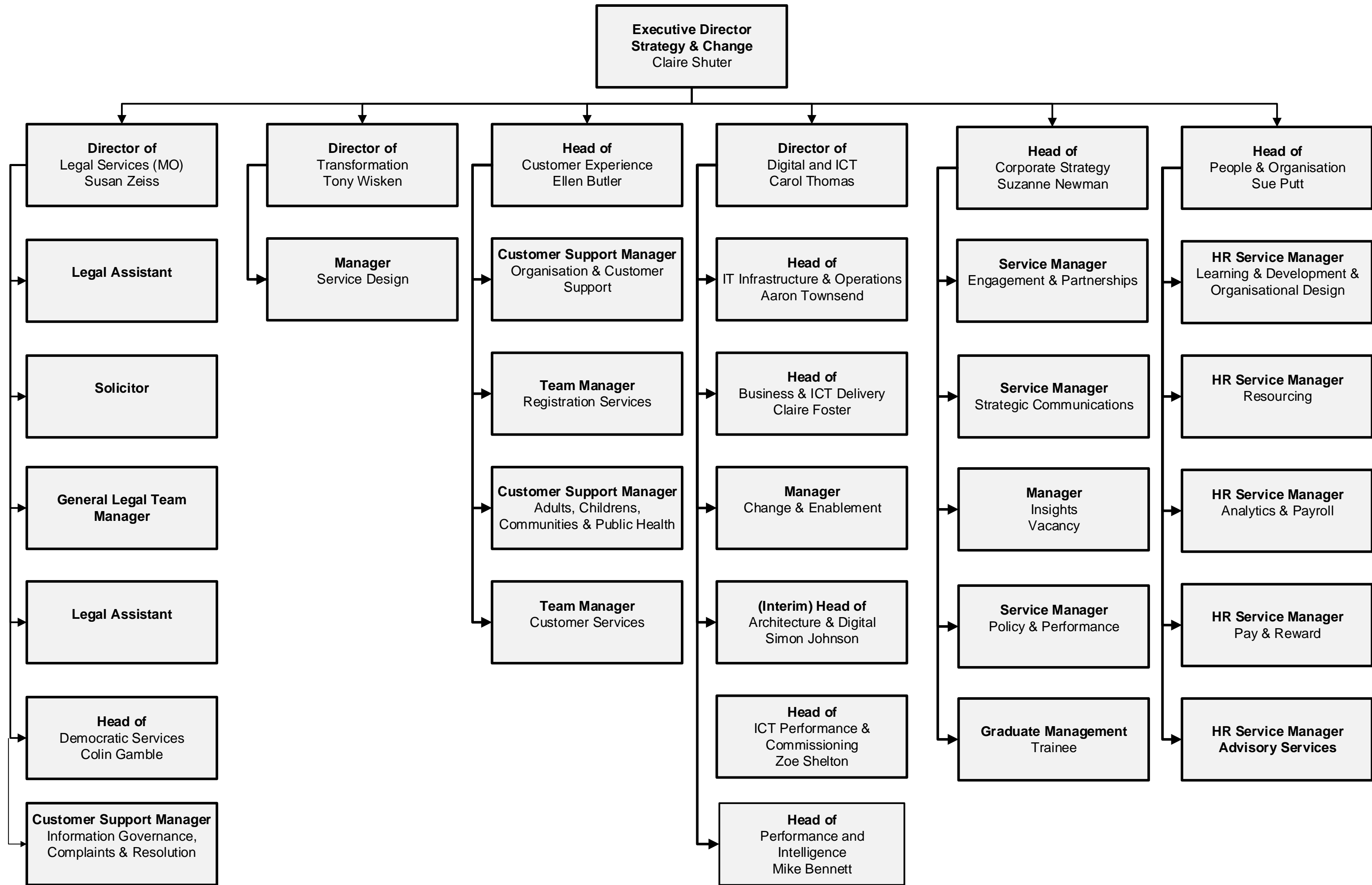
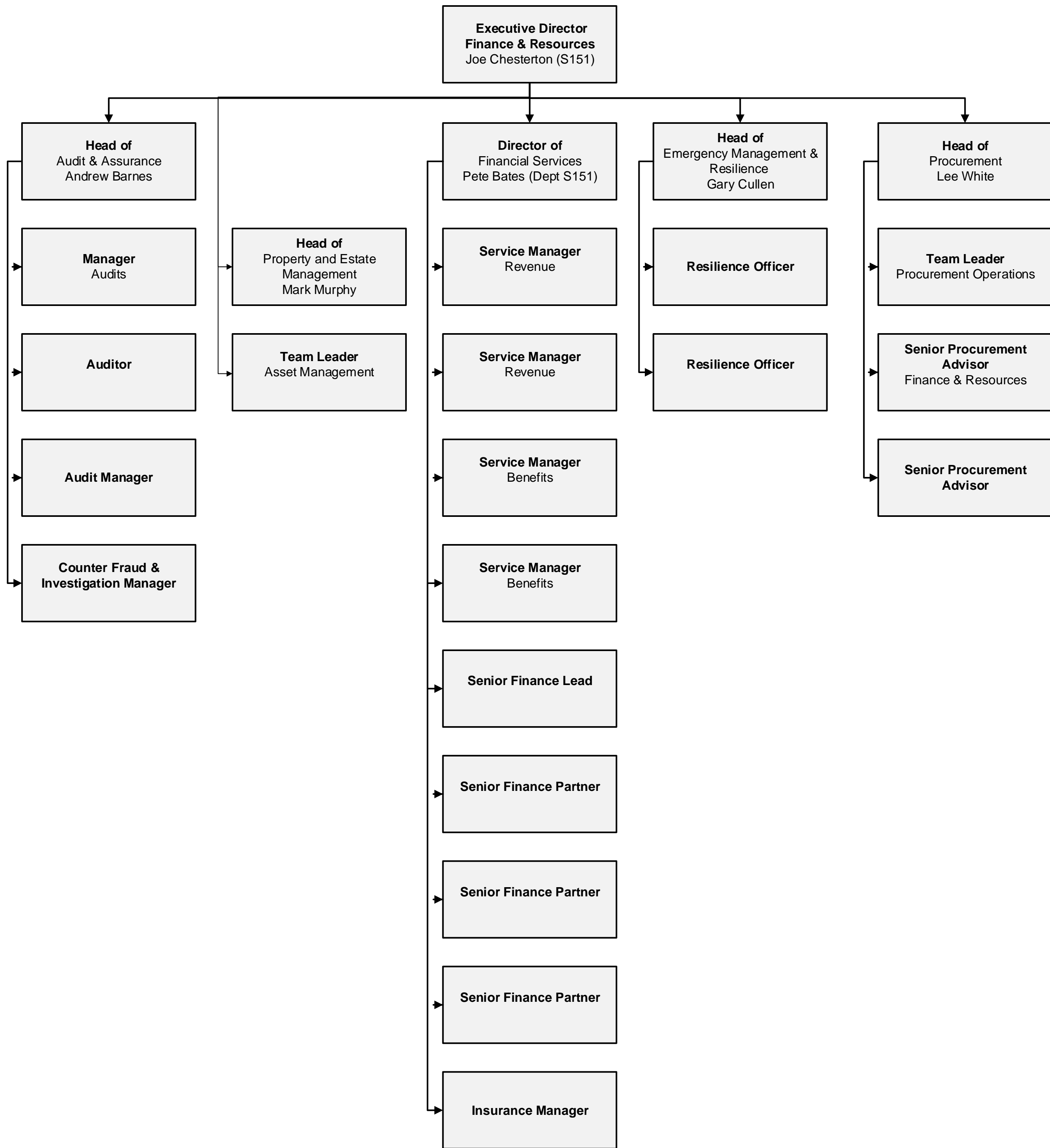


**Direct reports to CLT**

**Chief Executive  
Colin Ansell**







**Executive Director  
Children & Public Health**  
Michael Marks

**Director of  
Education, Inclusion & Early  
Years**  
Liz Hunt

**Head of School  
Performance and  
Improvement Service**  
Amanda Champ

**Head of Early Years**  
Vacancy

**Head of SEND**  
Gary Bloom

**Director of  
Public Health**  
Krishna Ramkhelawon

**Senior Public Health  
Principal**

**Public Health Consultant**

**Senior Lead  
Children & Public Health  
Department**

**Public Health Consultant**

**Senior Public Health  
Principal**

**Director of  
Children's Social Work, Early  
Help & Youth Support**  
Lissa-Marie Minnis

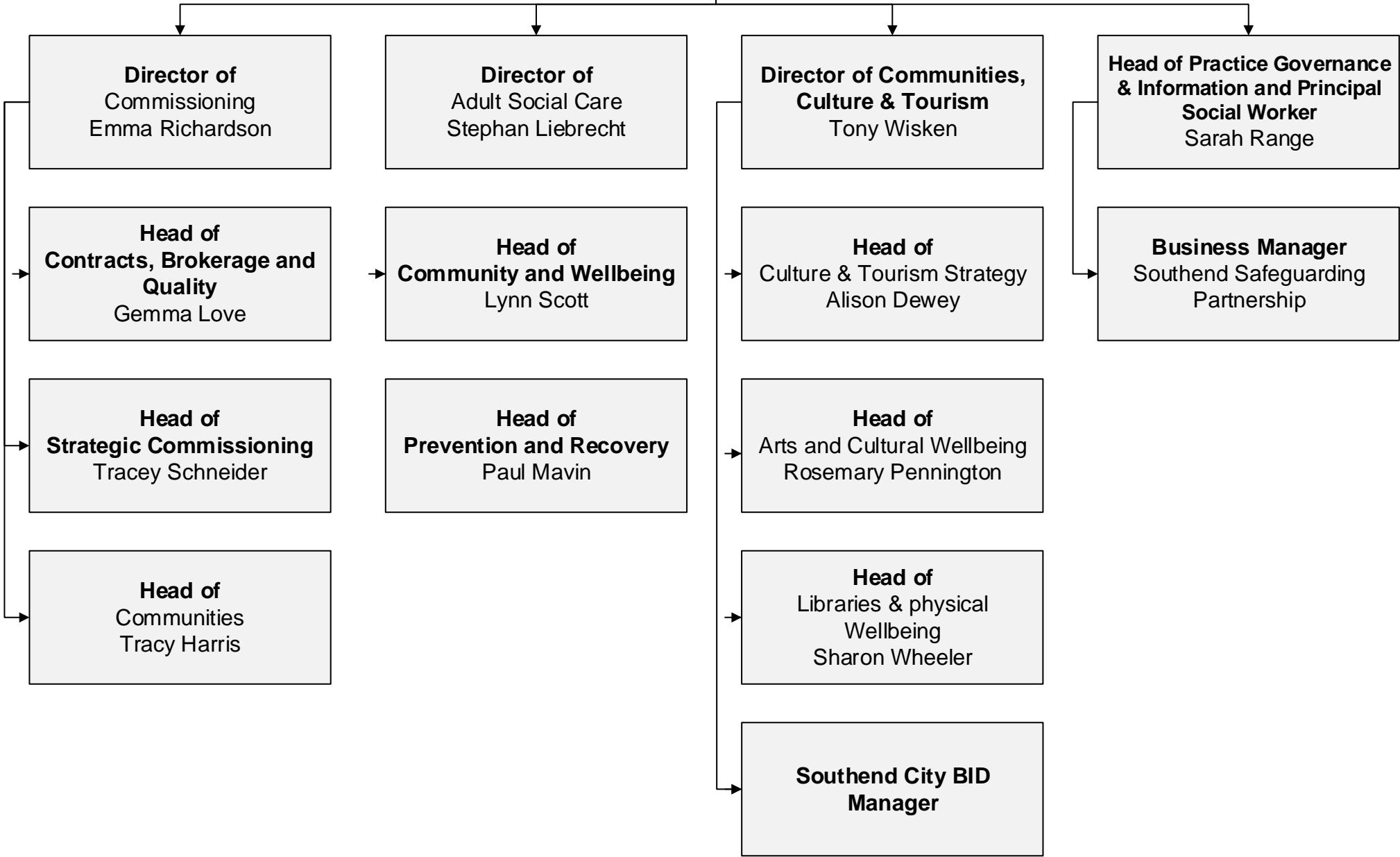
**Head of Service  
Intergrated Children, Youth  
& Family Support**  
Carol Compton

**Head of Service  
Children's Services**

**Head of  
Plans and Reviews**  
Ruth Baker

**Head of  
Corporate Parenting**  
Nick Crick

**Executive Director  
Adults & Communities**  
Mark Harvey



**Executive Director**  
**Environment & Place**  
Alan Richards

**Director of**  
Regeneration, Housing and  
Regulatory Services  
Glyn Halksworth

**Head of**  
Regulatory Services  
Elizabeth Georgeou

**Head of**  
Housing Policy  
Olivia Westberg

**Head of**  
Housing Supply  
Tim Holland

**Director of**  
Infrastructure and  
Environment  
Richard Lumley

**Head of**  
Highways & Coastal  
Neil Hoskins

**Head of**  
Traffic & Parking  
Vacant

**Head of**  
Environment  
Jo Gay

**Director of**  
Planning and Economy  
Kevin Waters

**Head of**  
Economic Inclusion and  
Business Engagement  
Nick Brown

**Service Manager**  
Development Management  
and Enforcement

**Service Manager**  
Strategic Planning and  
Infrastructure

**Service Manager**  
Building Control

**Head of**  
Community Safety  
Simon Ford

**Manager**  
Surveillance and Operations

**Manager**  
Community Safety

**Manager**  
CSU Strategy and Insights